

19 NOIEMBRIE 2016  
BUCUREȘTI



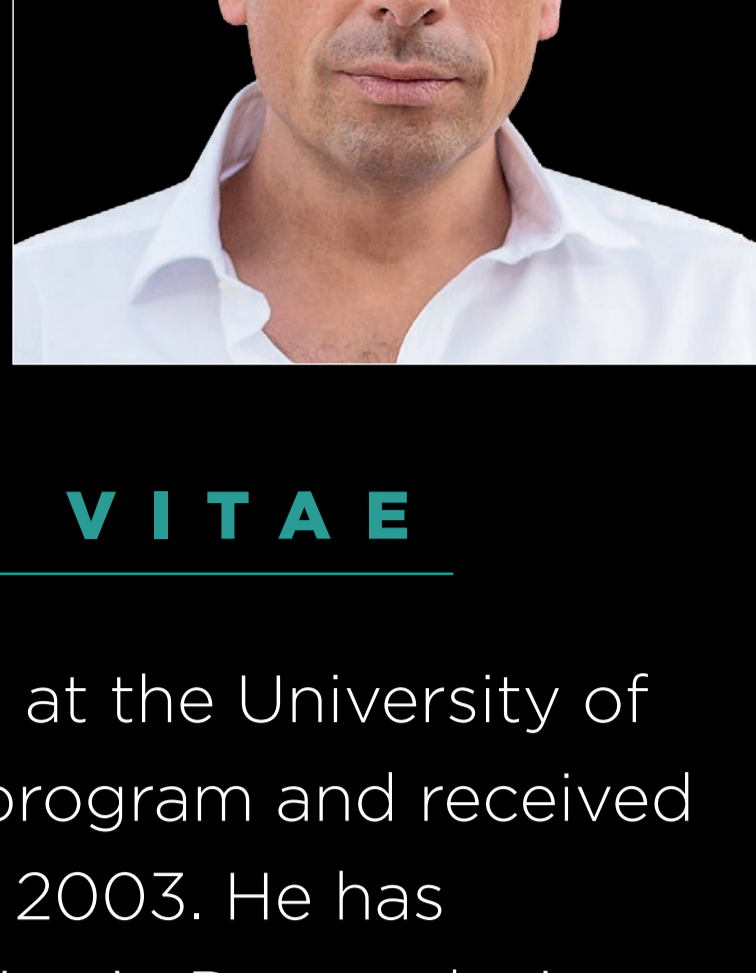
Sheraton®

# ORTHODONTIC PREPARATION FOR ORTHOGNATHIC SURGERY: PRINCIPLES AND BIOMECHANICS



## LECTOR

PROFESOR  
**STEFANO  
TROIANI**



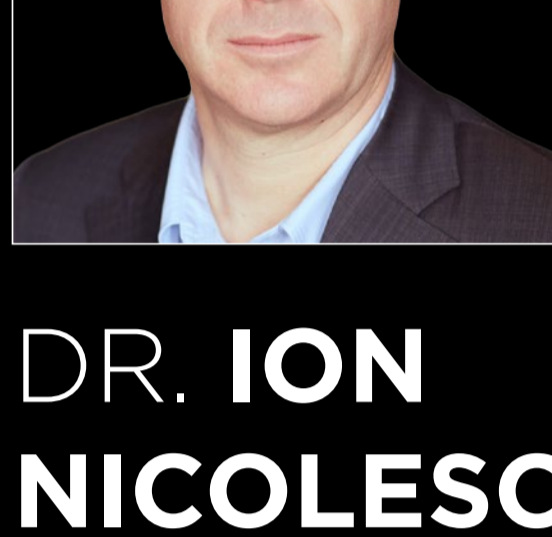
## CURRICULLUM VITAE

**Stefano Troiani** graduated at the University of Aarhus (DK) orthodontic program and received his MSc in Orthodontics in 2003. He has maintained a private practice in Denmark since 2003 and in Germany since 2008. He has worked as Clinical Assistant Professor at the Dept. of Orthodontics of the University of Aarhus from 2005 to 2007. He has been the scientific director of the Alpe Adria Face Master held at the University of Graz, Ljubljana and Zagreb in 2012-2013. He has been consultant orthodontist at the department of maxillo-facial surgery of the hospital of Sønderborg (Denmark) from 2008 to 2009. He is consultant orthodontist at the department of maxillo-facial surgery of the university hospital of Odense (Denmark) from 2008 to present.

## MODERATORI ORTHO/CHIRURGIE



PROF.  
**IRINA ZETU**



DR. **ION  
NICOLESCU**

## PROGRAM

### 1. When does a patient need orthognathic surgery?

Challenges for the orthodontist in facial planning

### 2. The orthodontic decisions for orthognathic surgery.

Extraction vs non extraction, transversal expansion (SARPE vs multisegment)

### 3. Step by step dental planning

### 4. Difference in levelling of occlusal plane in short and long face patients

### 5. Challenges in orthodontic preparation for surgery.

Different solutions for fitting superior and inferior arch length, for symmetry and for eliminating posterior precontacts.

### 6. Choice of bracket prescription and wire sequence in straight wire treatment for orthognathic surgery

### 7. Upper and lower incisors inclination correlated with the occlusal plane.

Associated techniques: corticotomies, distraction osteogenesis.

### 8. Digital model surgery, digital orthodontic planning.

### 9. Most common complications after orthognathic surgery.

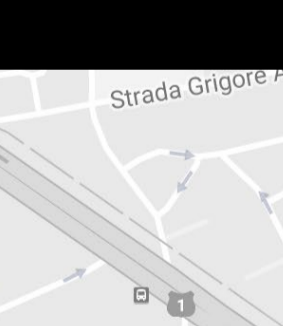


## DATA

**19 NOIEMBRIE 2016**

ÎNTRE ORELE 09:00 - 18:00

## LOCAȚIE



Sheraton®

CALEA DOROBANTILOR 5-7

BUCUREȘTI



## ORGANIZATORI



NAOS

## POWER BY

**GC Orthodontics**

GLOBAL EXPERTS IN ORTHODONTICS

## TAXA DE PARTICIPARE

**900 RON** (TVA INCLUS)

EFFECTUAȚI PLATA ÎN CONTUL:

**S.C. ORTOFORUM S.R.L.**

UNICREDIT BANK

**RO64 BACX 0000 0003 2141 4000**

## CONTACT

ANDREI ROTARU

TEL: 0751 512 682

E-MAIL: [office@ortoforum.eu](mailto:office@ortoforum.eu)